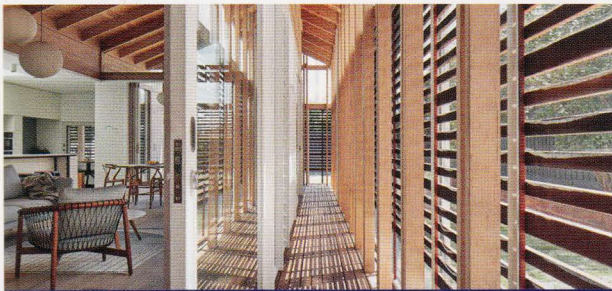


**COMMENDATIONS**

HOUSE ALTERATION AND ADDITION OVER 200 m<sup>2</sup>



Amado House (Vic) by Make Architecture.  
Photograph: Peter Bennetts



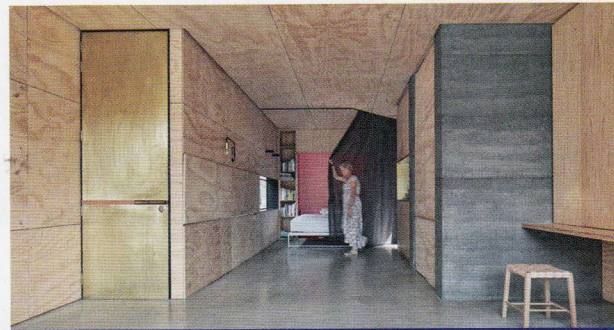
Gibbon Street (Qld) by Cavill Architects.  
Photograph: Christopher Frederick Jones

APARTMENT OR UNIT



Darling Point Apartment (NSW) by Brad Swartz Architect.  
Photograph: Katherine Lu

SUSTAINABILITY



Balnarring Retreat (Vic) by Branch Studio Architects.  
Photograph: Peter Clarke



Tent House (Qld) by Sparks Architects.  
Photograph: Christopher Frederick Jones

See more, visit  
[housesawards.com.au/gallery](http://housesawards.com.au/gallery)